

**DRIVE THE CHANGE**



BASKET



Winch



craNE



underbridge



**One machine, a thousand solutions. Una máquina, mil usos**



basket



underbridge



crane




winch




**ISOLATOR BATTERY SWITCH**  
interruptor de la batería



**SUPER SILENT ENGINE COVER WITH FAST LOCK**  
cubierta del motor



**GREASE POINT**  
punto de engrase



**HEAVY DUTY RUBBER TRACK**



**MIS**  
**RELIABLE FEEDBACK SYSTEM FOR CONTINUOUS COMMUNICATION WITH THE MACHINE'S FUNCTIONS.**  
Sistema de comunicación continua con las funciones de la máquina.

**HSB**  
**DESIGNED TO INCREASE THE SPEED AND MOVEMENT OF THE ARM.**  
Incremento de la velocidad de movimiento del brazo.

**AIESS**  
**THE SYSTEM MANAGES THE THERMAL MOTOR FUNCTIONS, SETTING THE MOTOR TO IDLE AFTER EACH MANOEUVRE AND TURNING IT OFF WHEN IT IS NOT USED FOR MORE THAN 2 MINUTES. THE MOTOR RESTARTS AT THE TOUCH OF A BUTTON. THIS SYSTEM HELPS REDUCE FUEL CONSUMPTION AND ENVIRONMENTAL EMISSIONS.**

**START (A) STOP**  
El sistema gestiona las funciones del motor termico poniendo el al minimo automaticamente tras algunas maniobras y apagandolo si no se utiliza mas de 2 minutos; al presionar un solo mando , el m otor se pone en marcha de nuevo reduciendo consiguientemente el consumo y la contaminacion ambiental

**TCS**  
**THIS SYSTEM ENABLES STRAIGHT AND PRECISE CONTROL OF THE CRANE WHEN LOADING OR OFFLOADING ONTO TRANSPORT VEHICLES IN A SAFE FASHION.**

El sistema permite una gran sensibilidad de marcha de forma rectilínea para cargar y descargar la maquina del camion con total seguridad.

**DPS**  
**TWO POSITION STABILIZER**  
**SMALL AREA**  
2,5 MT X 2,5 MT  
**LARGE AREA**  
4 MT X 4 MT

Dos estabilizador posicionPequeña zona 2,5 mt x 2,5 mt  
área expandida 4mt x 4mt

**SSF**  
**TO STABILIZE AND DESTABILIZE THE MACHINE FULLY AND AUTOMATICALLY.**  
Estabilización y desestabilización de la maquina totalmente automática

**IPSONE**  
**SYSTEM FOR MONITORING AND REMOTE MANAGEMENT OF THE MACHINE.**  
Sistema de control y gestión a distancia de la máquina.

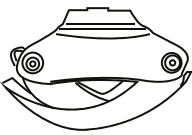
**BRO**  
**ROCKING ROLLERS**  
Rodillos mecedora

**OAFR**  
**HYDRAULIC OUTPUT 36 LT/MIN (8.17 GAL) TO POWER A RANGE OF HYDRAULIC TOOLS.**  
36 lt / min (8,17 gal) para alimentar una amplia gama de herramientas hidráulicas

**EMS**  
**SYSTEM FOR THE AUTOMATIC CONTROL OF THE ENGINE.**  
Sistema de gestión automática del motor


**TWIN SPEED**  
**TRACTION SYSTEM WITH TWO SELECTABLE SPEEDS.**  
Sistema de arrastre con dos velocidades seleccionables.

**MSS**  
**POWERFUL SYSTEM DESIGN TO CONTROL ALL FUNCTIONS OF THE MACHINE.**  
Arquitectura potente de control del sistema para la gestión de la máquina.



**Log grapples**  
Pinza para madera

Capacity / Capacidad 250 kg / 551.16 lb







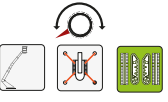






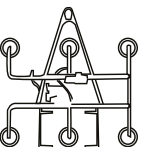
**Demolitions shears**  
Pinza demoledora

Capacity / Capacidad 250 kg / 551.16 lb



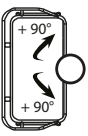


<p>Display 3 inch</p> 					<p>10 hours battery X2</p> 	
<p>35 functions</p> <p><b>35</b></p>					<p>Wireless</p> 	
 <p>battery level</p>	 <p>belt</p>	 <p>functions selectors</p>	 <p>EMERGENCY</p>	 <p>RPM Knob</p>	 <p>2 speed</p>	 <p>electric start</p>



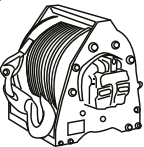
**Glazing Vacuum**  
**Ventosa para instalación**

Capacity / Capacidad 400 kg / 882 lb



**Basket Rotating**  
**Rotación de la Cesta**

+90°  
-90°



**Winch**  
**Cabestrante**

Cord length / Long. de la cuer. 30 m / 98.43 ft  
Capacity / Capacidad 400 kg / 882 lb

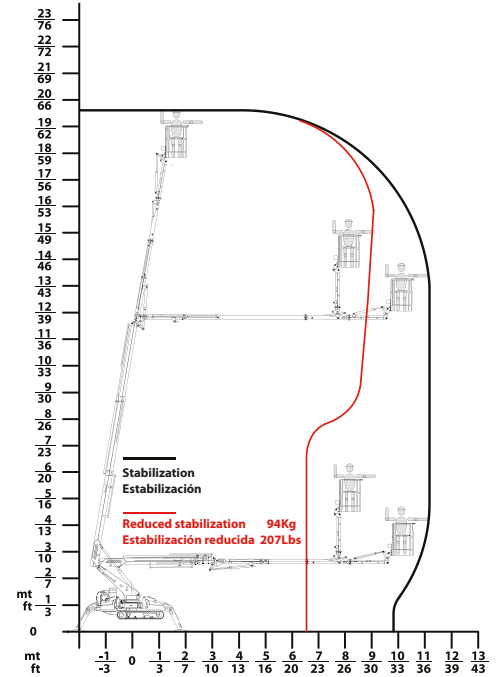
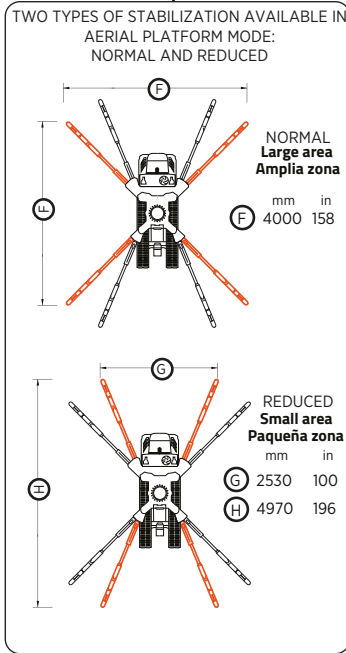
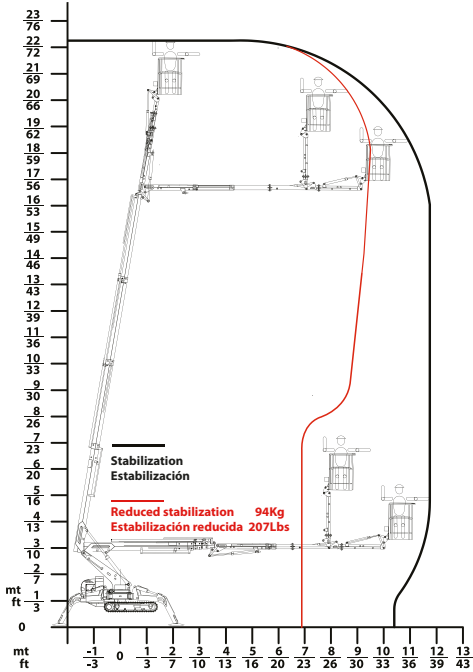


**KB23**

**Basket / Cesta**  
 Maximum load  
 Capacidad máxima  
 250 kg  
 (551 lbs)

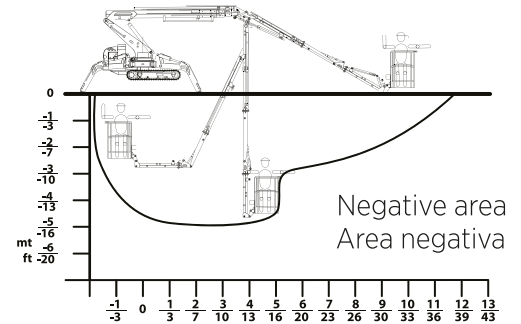
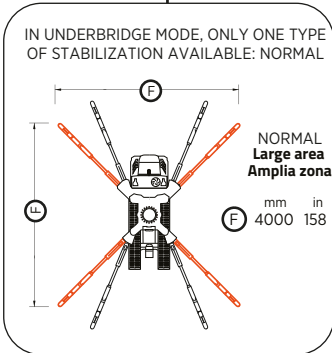
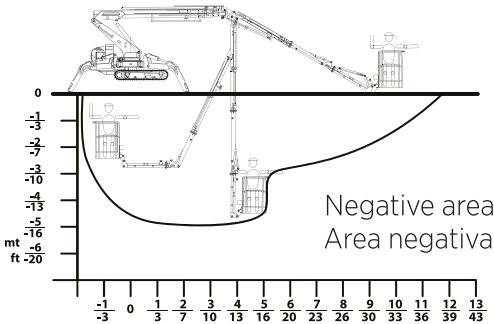
**Basket / Cesta**  
 Maximum load  
 Capacidad máxima  
 250 kg  
 (551 lbs)

**KB20**



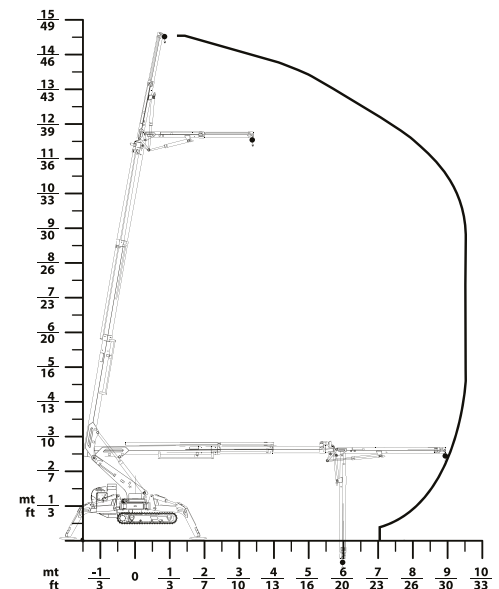
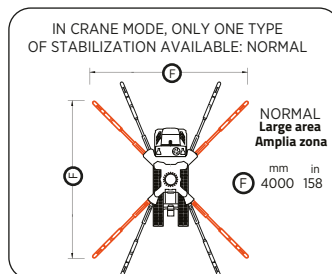
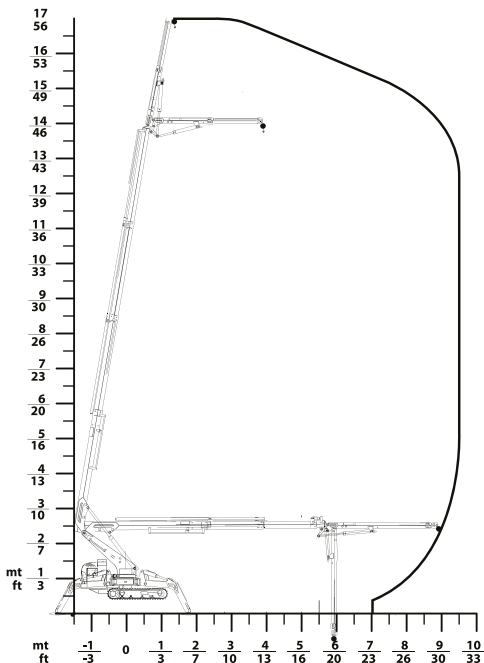
**Underbridge / bajo el puente**  
 Max. Working height  
 -5 m  
 (16.4 feet)

**Underbridge / bajo el puente**  
 Max. Working height  
 -5 m  
 (16.4 feet)



**Crane / Grúa**  
 Maximum load  
 Capacidad máxima  
 850 kg  
 (1874 lbs)

**Crane / Grúa**  
 Maximum load  
 Capacidad máxima  
 850 kg  
 (1874 lbs)



**KB 23**

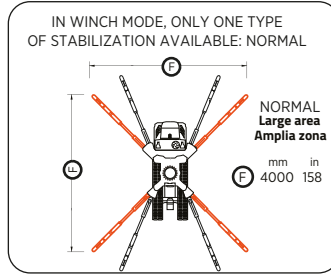
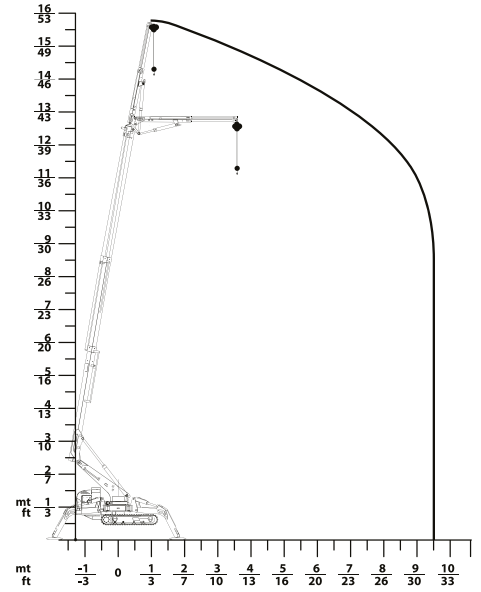
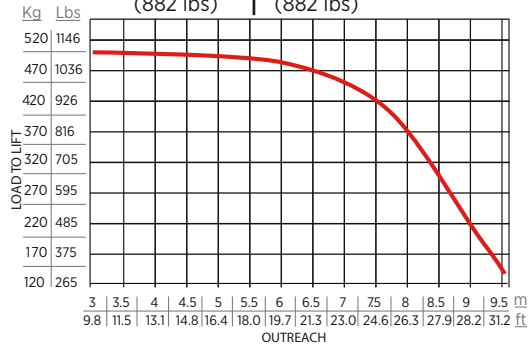
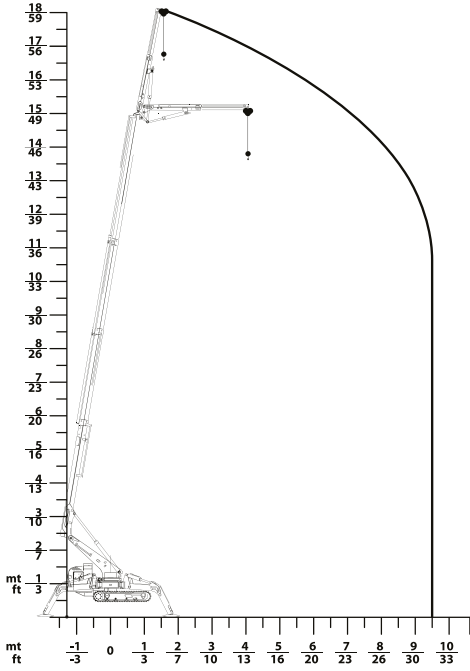
Winch / Cabestrante

Maximum load  
Capacidad máxima  
400 kg  
(882 lbs)

Winch / Cabestrante

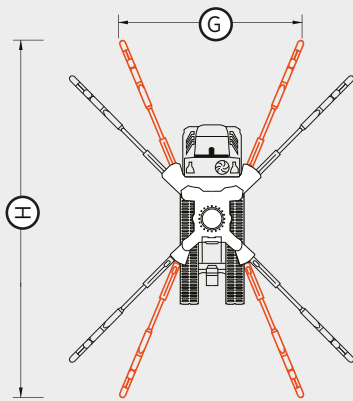
Maximum load  
Capacidad máxima  
400 kg  
(882 lbs)

**KB 20**



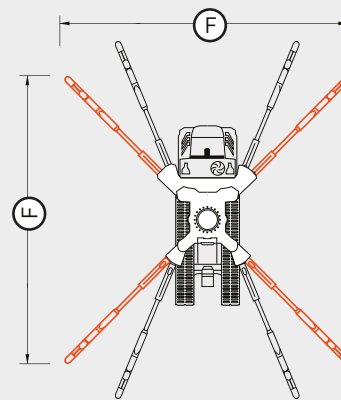
**KB 23** & **KB 20**

Two position stabilizer / Dos estabilizador posición



Small area  
Pequeña zona

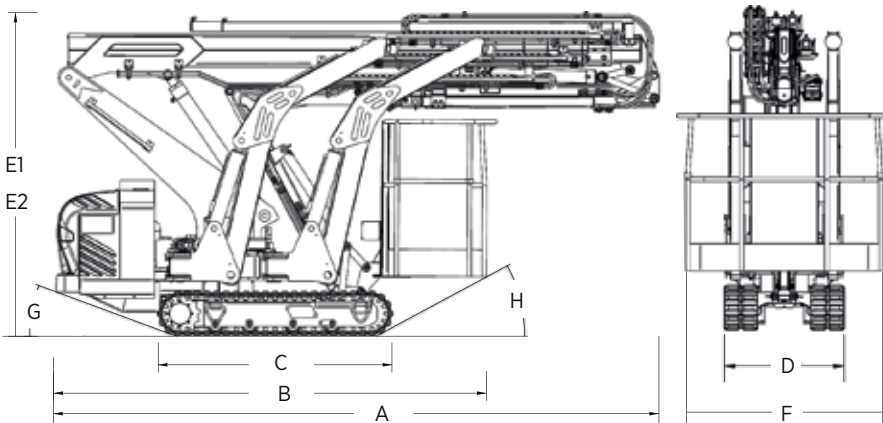
mm in  
G 2530 100  
H 4970 196



Large area  
Amplia zona

mm in  
F 4000 158

Dimensions / Dimensiones



DIMENSIONS / DIMENSIONES				
	mm	in	KB 20	KB 23
A	4470	176	●	●
B	3260	128	●	●
C	1765	70	●	●
D	1000	39.4	●	●
E1	2245	88	●	
E2	2395	94		●
F	min: 1420 max: 1560	min: 56 max: 61	●	●
G	20°		●	●
H	28°		●	●

SPECIFICATIONS		20	23
		METRIC	U.S.
<b>ENGINE / MOTOR</b>			
Internal combustion engine / motor endotér.:	Honda IGX 440 electronic control / con control electrónico	●	●
Pump voltage / Conexión eléctrica:	V 220/110	●	●
Frequency / Frecuencia:	Hz 50/60	●	●
Power / Potencia:	2.2 kw	●	●
<b>TRANSMISSION / TRANSMISIÓN</b>			
Pumps / Bombas:	n. 3 gear pumps / 3 con engranajes	●	●
<b>HYDRAULIC SYSTEM / SISTEMA HIDRÁULICO</b>			
Max pressure / Presión máxima	240 bar (3481 psi)	●	●
<b>TRACTION / TRACCIÓN</b>			
Speed max. offset / Veloc. máx de traslación	0-2.6 Km/h (0-1.62 mph)	●	●
Stabilizers / Estabilizadores:	electronic control / con control electrónico	●	●
Platform levelling	Hydraulic electronic control	●	●
Nivelado de la plataforma	Hidráulica con control electrónico	●	●
Boom	Hydraulically extendable	●	●
Brazo de trabajo	Con extensión hidráulica	●	●
Controls / Mandos	Electronic control of prop. hydraulics / Hidráulicos propor. con contr. elect	●	●
Oil tank capacity / Capacidad del depósito de aceite	35 lt (8 gal)	●	●
Maximum wind speed / Velocidad máx. del viento:	12.5m/sec (28 mph)	●	●
Electric system voltage / Tensión de la instalación eléctrica	12 V	●	●
Horizontal load max / Carga horizontal máx	50 daN	●	●
Manoeuvring Speed / Velocidad de maniobra	0.3 m/sec (0.7 mph)	●	●
Maxi. permis. tilt frame / Inclín. máx admisible del bastidor	1°	●	●
Gradeability max / Capacidad de subida máxima	20° In the directions of travel / En las direcciones de los viajes	●	●
<b>PERFORMANCE / PRESTACIONES BASKET/CESTA</b>		<b>20</b>	<b>23</b>
Max. Working height / Altura máx. de trabajo	19.4 m (63.7 feet)	●	
	22.30 m (73.2 feet)		●
Outreach with (80kg) / Brazo máx. del área de trabajo (80 Kg)(176.4 lbs)	11.2 m (36.75 feet)	●	
	11.75 m (38.66 feet)		●
Development up platform height basket / Desarrollo máx, en la plataf. de la cesta	17,40 m (57.1 feet)	●	
	20.30 m (66.60 feet )		●
Machine weight unladen / Peso sin operador	3210 kg (7077 lbs) (+/- 6%)	●	
	3384 kg (7460 lbs) (+/- 6%)		●
<b>PERF. / PREST. UNDERBRIDGE / DEBAJO DE PUENTES</b>			
Max. Working height / Altura máx. de trabajo	-5 m (16.4 feet)	●	●
Machine weight unladen / Peso sin operador	3210 kg (7077 lbs) (+/- 6%)	●	
	3384 kg (7460 lbs) (+/- 6%)		●
<b>PERFORMANCE / PRESTACIONES CRANE/GRÚA</b>			
Max. Working height / Altura máx. de trabajo	16 m ( 52.5 feet)	●	
	18.5 m ( 60.7 feet)		●
Maximum load / Capacidad máxima	850 kg (1874 lbs ) (+/- 6%)	●	●
Working radius / Radio de trabajo	9.5 m (31.2 feet)	●	●
Machine weight unladen / Peso sin operador	2990 kg (6592 lbs) (+/- 6%)	●	
	3164 kg (6975 lbs) (+/- 6%)		●
<b>PERFORMANCE / PRESTACION. WINCH/CABRESTANTE</b>			
Maximum load / Capacidad máxima	400 kg (882 lbs ) (+/- 6%)	●	●