

SY390C-10HD

GrMa



SANY

***SPECIALLY DESIGNED FOR
GRANITE & MARBLE APPLICATION***



ADVANCED ELECTRONIC POSITION
TECHNOLOGY

Operating Weight: 37,500 kg

Engine Power: 284 HP (212 kW)/ 2000 rpm

Bucket Capacity: 1.4m³ Scoop Bucket

SPECIFICATIONS

SY390C-10HD GRAMA

ENGINE	
Model	Isuzu 6HK1
Type	6 Cylinder, Electronic injection, CRDI
Rated Engine Power	284HP(212kW)@2000rpm
Max. Torque	1080Nm@1500rpm
Displacement	7.79L
Battery	2X12V

CONTROL SYSTEM	
Control System	Advanced DOMCS Intelligent Controller, Electronic Posicon Hydraulic System
Work modes	I, S, H, P

HYDRAULIC SYSTEM	
Main Pumps	2 Variable Displacement Axial Piston Pumps
Max. Flow	2 X 320 lpm
Pilot Pump	1 Gear Pump

RELIEF VALVE SETTINGS	
Implement Circuit (Power Boost)	34.3 MPa (37.0 MPa)
Swing Circuit	30 MPa
Travel Circuit	34.3 MPa
Pilot Circuit	3.9 MPa

SWING SYSTEM	
Swing Motor	Axial Piston Motor
Parking Brake	Oil Disc Brake, Hyd. Operated Automatically
Swing Speed	8.8 rpm

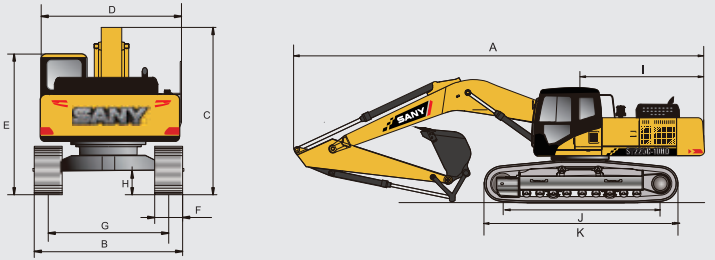
TRAVEL SYSTEM	
Travel Motors	2 x Axial piston, Two Speed Motors
Parking Brakes	Oil Disc Brake Per Motor
Max. Travel Speed (L/H)	3.5 / 5.5 Kmph
Max. Traction Force	320 kN
Grade Ability	70°(35%)
Ground Pressure	68.8 kPa

UNDERCARRIAGE & WORKING DEVICE	
Track Shoes (Each side)	49
Upper Roller (Each side)	2
Lower Roller (Each side)	9
Track Guard(each Side)	3
Std. Track	600 mm (Ultra HD 16 mm Thick)
Std. Boom	6500 mm
Std. Arm	2800 mm
Std. Bucket	Granite Bucket

SERVICE REFILL CAPACITIES	
Hydraulic Tank	380 L
Fuel Tank	690 L
Engine Oil	36 L
Radiator	28 L
Swing Device	10.5 L
Travel Device	2 X 8.5 L

CAB & CONTROL	
Cab	
FOPS/ROPS cabin with HD Front & Top guard, Auto Climate Control, Air Conditioning System, Adjustable Suspension Seat	
Control	
7" Flat Panel Intelligent Digital Colour Display	
Electric rotary type engine throttle & Auto Idle System	

DIMENSION (Unit: mm)

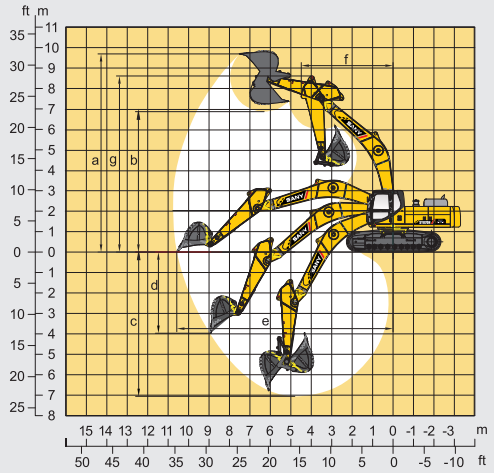


DIMENSION (Unit: mm)	Arm 2800 (mm)
A. Overall Length	11425
B. Overall Width	3190
C. Overall Height	3825
D. Upper Width	3230
E. Overall Height of Cab	3440
F. Std. Track Shoe Width	600
G. Track Gauge	2590
H. Min. Ground Clearance	550
I. Tail turning radius	3610
J. Track grounding length	4140
K. Track length	5100

DIGGING FORCES

Max. Bucket Digging Force	235 kN
Max. Arm Crowding Force	210 kN

WORKING RANGE



WORKING RANGE (mm)

a. Max. Cutting Height	9920
b. Max. Dumping Height	7010
c. Max. Digging Depth	7155
d. Max. vertical boom digging depth	5125
e. Max. Digging Reach	10750
f. Min. turning radius	4390
g. Max Height at min swing radius	8930

BUCKET

Capacity	Width (mm)	Weight (Kg)	Arm Length 2800mm
1.4m³ Granite (STD.)	1448	1933	√
1.9m³ Rock (OPT.)	1550	1800	√

SANY HEAVY INDUSTRY INDIA PVT. LTD

HEAD OFFICE

Address : Plot No. E-4, Chakan Industrial Area Phase-III,
Village Kuruli, Taluka Khed, District Pune - 410501,
Maharashtra, INDIA.

E-mail : customercare@sany.in

Website : www.sany.in

Toll Free No.: 1800-209-3337

